

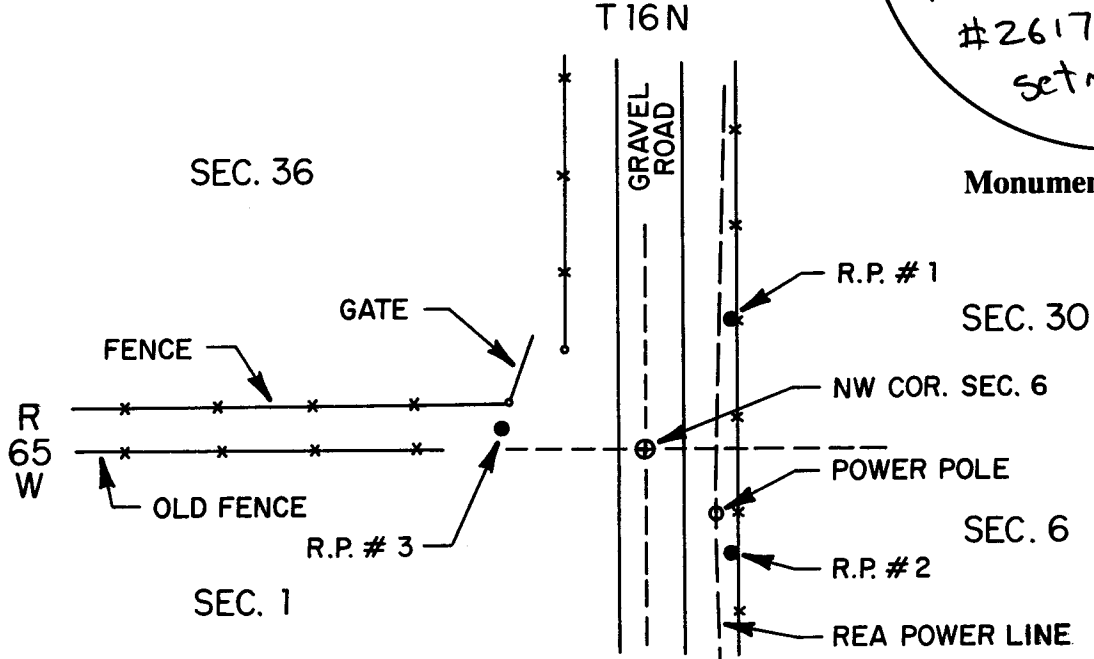
# Wyoming Certified Land Corner Recordation Certificate

*This form is to be completed in accordance with W.S. 36-11-101, printed in black ink or typed, and shall be for one individual corner.*

Describe below, or show in sketch attached to this form, the corner evidence found. Include condition and type of monument, accessories and ties. Describe any maintenance or rehabilitation performed. In the circle to the right, show monument inscription. If monument is determined lost or obliterated, restate the GLO or BLM original field note record; describe or show the procedure used to reestablish the corner and all data as above for a found monument.

Find spike  
 in location of CORNER  
 PER R.L. HUDSON  
 RLS# 519 CORNER RECORDATION 1972  
 Replaced with 5/8" ReBAR &  
 Alum. CAP. Stamped P.E.R.L.S  
 #2617.  
 Set new R.P.'s.

Field Date 1/91 Office Reference \_\_\_\_\_



**Monument Inscription**

RECEIVED  
 LARAMIE COUNTY  
 CHEYENNE, WY.  
 087253  
 '91 JUL 22  
 R 64 W N.T.S.

State of Wyoming  
 Office of County Clerk  
 County of LARAMIE

R.P.s - 5/8" Rebar w/Al CAP.  
 R.P. #1 AZ 27-00-12 - 59.63 feet  
 R.P. #2 AZ 130-31-20 - 43.27 feet  
 R.P. #3 AZ 278-20-51 46.81 feet

This Certified Land Corner Recordation Certificate was filed for record on the \_\_\_\_\_ day of \_\_\_\_\_, 19 \_\_, in Book No. T \_\_\_\_\_, R \_\_\_\_\_, on Alpha-Numeric coordinates A-1 and was noted on the Cross Index Plat.

County Clerk

Corner Type:  Aliquot Corner  Other  
 Section(s) 36 Meridian 6th PM.  
 Corner Name Sec. Township 15N. Range 64 W Page \_\_\_\_\_  
 Sheet 1 of 2

**BOOK 1306**

*A-1*

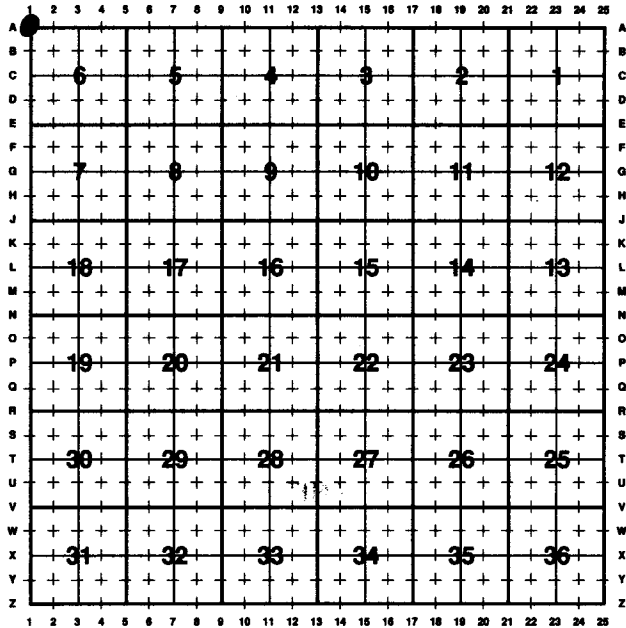
**41**

**Directions for using the  
Cross Index Plat**

Section, quarter and sixteenth corners will be marked with a dot at the corner location. The alpha-numeric coordinate number is then determined for the intersection of the two lines. A corner that applies to two or more townships shall be filed under all that apply by the use of photo copies.

Closing corners will be indexed under the township in which they control ownership. For 1/64, 1/256, 1/1024 and non-aliquot corners lying between grid designations, mark the appropriate grid area with a dot and use the index code to the north and west (local systems may be used if the method is approved by the County Surveyor or Clerk and a written description of its use is filed in the front of each book of certificates).

**Cross Index Plat**



**State Plane Coordinates (optional)**

Zone      W      WC      EC      E      feet/meters

NAD 1927       NGVD 1929       NAD 1983       NAVD 1988

North (Y) = \_\_\_\_\_ East (X) = \_\_\_\_\_ EL = \_\_\_\_\_

Latitude \_\_\_\_\_ Longitude \_\_\_\_\_

Scale Factor \_\_\_\_\_ Geoid Height \_\_\_\_\_

**Certification**

I, James P. Voeller, Wyoming PLS/PE 2617 certify that I, or others under my supervision, have performed the work as described above and completed this form.

Company or Agency AUI  
 Mailing Address 2035 Westland Road  
 Street Address Cheyenne Wyo  
 City, State, ZIP 82001  
 Telephone, FAX 637-6017 ac-307-



[Signature]  
 Signature, Seal, and Date

Sheet 2 of 2